

IN THIS ISSUE

[Dale Chihuly](#)
[Design for Hope](#)
[Portfolio Review](#)
[Sample Sale](#)
[Partner Events](#)
[CEUs](#)

Keep In Touch

asidaznorth.org



Welcome New Industry Partners

Jenny Milpacher
DeMille Global, LLC
 (503) 957-4014
Jenny@demilleglobal.com

Catherine Sutter
Pro-Tec Mobile Comm
 (520) 423-2212
cathysazmta@cox.net

Brian Lerkins
Victoria + Albert Bath
 (843) 566-3005
blerkins@vandabaths.com

Penelope Bankowski
Gem Surfaces
 (480) 779-0791
penelope@gemsurfaces.com

Mark Thomsen
Floor & Decor Pro Services
 (480) 838-3046
mthomsen@flooranddecor.com

Welcome New Design Members

Hank Arens, Allied ASID
 April Dudley, Allied ASID
 Cinda Lutz, Student ASID

Arizona North Chapter's Creative Brief

President's Letter



April...a month of re-birth. In many parts of the country, they're beginning to pull out of their long winter and a sense of renewal and anticipation sets in.

In Arizona, April is all about being outdoors... Baseball, Pat's Run, Country Thunder, Exotic Car Shows, the Chandler Family Bike Ride, and food & wine festivals such as The Italian Festival, Scottsdale Culinary Festival, Birds & Beer, Wine & Dine and the BBQ Festival. There are also art

festivals throughout the Valley of the Sun that will be sure to delight the senses.

An important day in April is Earth Day, April 22nd. First celebrated in 1970, it is now observed in more the 192 countries each year, it brings focus and demonstrates support for environmental protection. Earth day was founded by US Senator Gaylord Nelson, who was awarded the Presidential Metal of Freedom in honor of this contribution.

I believe in Earth Day and what it stands for. I believe that we all should strive to leave this world a better place for future generations. What does that mean in the design world? It means re-use, and re-purpose. It means using sustainable materials, recycling, using low VOC paints and supporting manufacturers who adopt environmentally responsible manufacturing techniques.

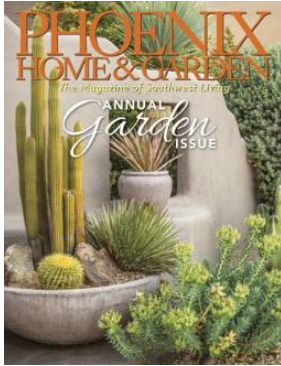
Personally, it also represents buying local and supporting our local suppliers instead of getting a 'better deal' off of the internet. I do a lot of price checking on the internet...and I'm sure I'm not alone...but I always buy from my local distributor when I can. I recently had that happen with some hardware that I had been sourcing. It ended up costing me slightly more to get it from 'my guy', but I maintain our relationship and know that they'll stand behind the product.

But enough of that...on to some great events that are coming up. April 17th we're celebrating the outdoors and the extraordinary works of Dale Chihuly at the Desert Botanical Gardens. Complimentary admission to the Gardens is provided for our members, and we have a very distinguished panel who will discuss the integration of interior and exterior space, and landscape design.

May will bring a salute to our mid-century modern roots in Phoenix, with

Media Partner:
Phoenix Home & Garden

[Editorial Calendar & Advertising](#)



2014 Sponsors

Platinum Sponsor:



Gold Sponsor:



Silver Sponsors:



BRIZO

a presentation from Modern Phoenix' Alison King, Associate Professor of Design at the Art Institute of Phoenix...and mid-century modern aficionado. Look for the details...

So, please come and join us for these great events! Learn something new, connect with old friends and make new acquaintances. I personally can't think of a better way to way to immerse my soul in our design culture.

Happy Earth Day!

Gretchen

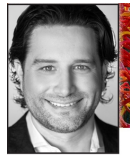
Gretchen Palmer, Allied ASID
President, Arizona North Chapter

Phoenix Home & Garden's Letter from the Editor:
Linda J Barkman



With its focus on gardens, the April issue of *Phoenix Home & Garden* is abloom with ideas and eye candy. Green thumbs, in particular, will delight in the picture-perfect plant combos, tips from landscapers, and list of local hot spots for plants, pots and other gardening must-haves. Also to be enjoyed are a very special home in Rio Verde with interior design by **Jana Parker Lee, ASID**, and our Guest Artist feature on **Dyana Hesson** and her beautiful botanical paintings.

Dale Chihuly at the Desert Botanical Garden: Don't Miss the April Chapter Meeting! April 17th, 5:30-8p
Register Today!



Erik Peterson, AIA
Principal
PDK Architecture



Chris McKibben, RLA
Landscape Architect
Swaback Partners, PLLC



Anita Lang, Allied ASID
Principal
IMI Design, LLC

Integrating Architecture, Landscape & Interior Design.

Don't miss this dynamic panel discussion on our unique outdoor living space opportunities at the Desert Botanical Garden!

Registration now open!

[Click here for details](#)

ASID Sponsored 2nd Annual Design for Hope
Thu, April 24th, 5:30-8:30pm-Stardust Bldg Supply

Register Now!

Don't miss the event to once again challenge local interior designers to design kitchens with recycled and reused materials! Explore their creative renderings and unique DIY projects that will inspire you to reuse and repurpose!

[Click here for details](#)



Coverings Interior Design Portfolio Review at Trade

TOTO®

Show April 29th-May 2nd!



**INTERIOR
DESIGN**

Bronze Sponsors:



Register for Coverings

Edie Cohen of *Interior Design* will be hosting a **Portfolio Review** composed of one-on-one meetings where designers can showcase their latest projects and receive feedback from the magazine's point of view.

Reserve Your Portfolio Review

Calling ALL Industry Partners & Designers!
ASID Sample Sale Needs Your Donations!
Sat, May 3rd, 9am-2pm Scottsdale Design Center

All members are invited to donate sellable samples, close-outs, and other items to our sale. Drop-off locations will be posted soon. We need your donations to make this event a success. A portion of the proceeds go to student membership scholarships and Smile Train.

[For more info](#)



Copper Sponsors:



Not receiving our publications?

If you are not receiving the Desert Design magazine or emails from the Chapter, you likely need to update your contact information with ASID. Visit [MyASID](#) today to keep informed!

Do you need CEUs?

An Evening with Swarovski Tomorrow: Wed, April 9th, 5:30-8pm Hosted by Phoenix Home & Garden and Premier Lighting

All the information you need to comply with your membership's CEU requirements can be found [here](#).

If you couldn't make a recent Chapter event, see what you've missed:



Collaboration - Feb '14



Rounds Presentation-Feb '14



Bentley Project - Jan '14



ColorMix - October 2013



Design Excellence - 2013



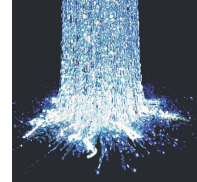
Register Now!

Come see the original, world renowned "Cascade" designed by Vincent Van Duysen. Enter to win a Swarovski chandelier provided by Premier! Appetizers and drinks will be served.

RSVP or call 480-948-9896.
[Read more](#)

Earn 0.1 CEU Credit; Premier Lighting Event!
Wed, April 9th, 4:30-5:30pm [Register now](#)

Crystal Fundamentals: Introduction to crystal and its use with lighting. Attendees receive Swarovski pens. Limited seating, [RSVP now](#).



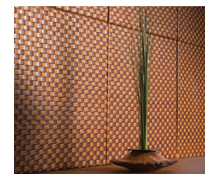
Wine Down Wednesday at Allstate Appliances
Wed, Apr 9th, 5:30-7pm PV Design Center
Register now



Join us as **Janne Mahan** will be cooking and demonstrating...you're in for a treat! The event is free but space is limited. Please RSVP
[More Info](#)

Earn 0.1 CEU Credit; Underfoot University!
Thu, April 17th, 11:30a-1pm [Register now](#)

Leather for Wall Surfaces Lunch & Learn
Underfoot Luxury Trade Showroom
CEU-102566
[More Info](#)



Houzz Design Workshops in Santa Fe and Albuquerque, April 22-23



DESIGN WORKSHOPS

Register Tue, April 22nd - Santa Fe [More Info](#)

Register Wed, April 23rd - Albuquerque [More Info](#)

****Though there is no fee for these events, the ASID-New Mexico Chapter will begin accepting donations for special events hosted by the Chapter. Any donations provided will go towards the ASID Foundation and the local Chapter to host more events like this!**

Floor & Decor Industry Networking Event!

Wed, April 23rd, 5-8pm **[Register now](#)**

Welcoming valued Architects, Builders, Contractors, Designers, Installers and Realtors! Dinner at 6pm. Great raffle prizes. [More info](#)



Shuttersandco Scottsdale Grand Re-Opening,
Thu, May 1st, 4-7pm



Join us as we welcome Designers Workroom and H&R Fabrics into our showroom. (480) 478-8612

Are You Pinning? Wed, May 6th, 5-7pm at Westar Kitchen & Kath **[Register Now](#)**

You're missing out if you are not Pinning! Bring your laptop. Coffee & noshes served. \$20 payable to **USO** for Operation Enduring Care. [More Info](#)



0.2 CEUs: Dunn-Edwards Designer Event on Tue, May 20th, 11a-1:30p, Phx Factory **[Register Now](#)**



2 CEU Presentations, Modern Masters Presentation, Tour of the LEED Gold Phoenix Factory, Networking Lunch, Regional Grand Prize Drawing & more! [More Info](#)

0.2 CEUs: Dunn-Edwards Designer Event on Wed, May 21st, 11am-1:30pm, Scottsdale Store

[Register now](#)

2 CEU Presentations, Modern Masters Presentation, Networking Lunch with Designers and Contractors, Regional Grand Prize Drawing & more! [More Info](#)



Interior Design Camp in Las Vegas, July 19th-21st
[Register Now](#)

Interior Design Camp is a two-day seminar hosted by Celebrity Interior Designers **Kelli Ellis** and **Lori Dennis**.

Interior Design Camp is for designers at every level of expertise.

Interior Design Camp reveals how to thrive and excel in today's economy.

[More Info](#)



CEUs Online Anytime, Anywhere [**Register Now**](#)

0.2 CEU On-Line: The Art of Difficult Conversations
0.1 CEU On-Line: Designing for Business Growth in
Turbulent Times



Bud's Drapery Den invites you to Del Mar, CA!



**BDD 2015
Getaway**

You and a guest can enjoy a visit to the
L'Auberge Del Mar in beautiful Del Mar,
California courtesy of BDD. [Read more](#)

